



How to Change a **VISTA™** Wearable Camera Battery

415 East Exchange Parkway, Allen, TX 75002

www.WatchguardVideo.com

1-800-605-6734

Connect With Us





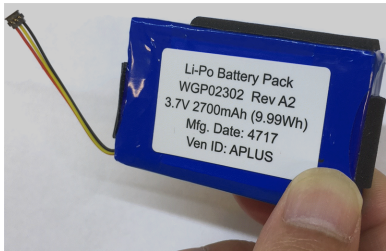



Replacing the VISTA battery

This document describes how to change the battery pack for the VISTA Wearable Cameras, Standard, Extended, and WiFi.

If the battery needs to be replaced in your VISTA, you can return it to WatchGuard Video or you can change it yourself. If you decide to change it yourself, you need the replacement battery pack and special tools to remove the back plate. Working on the VISTA Wearable Camera is a delicate operation and you need to follow these instructions.

Parts and tools required

The Standard, Extended, and WiFi VISTA cameras each require their own tool and replacement battery pack. Ensure that you have the correct battery pack. Order the kits and tools from WatchGuard.

Battery	Tool	Kit Part number
<p>Standard battery</p> 	<p>WGT00046 Torx® Flag Handle T5x35 mm</p> 	<p>WGP02302-KIT</p>
<p>Extended and WiFi battery</p> 	<p>WGT00038 1.5 mm Allen L Hex Key</p> 	<p>WGP02224-KIT</p>

Removing the Battery in a VISTA Camera

To get started changing the battery, you need a flat work space to place the VISTA camera on with your tool and the new battery.



Note: WatchGuard recommends that you change the battery in an ESD-safe environment. You can purchase the Anti-Static Field Service Kit (P/N WGT00034) from WatchGuard. The field kit size is 24 inches by 24 inches.

Opening the VISTA Wearable Camera



Warning! Turn off the camera before removing the battery or the video can be corrupted.

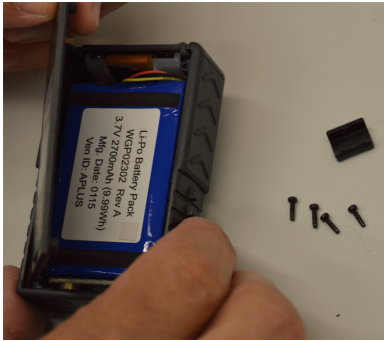
Follow these steps to change your battery.

1. Ensure that the VISTA Wearable Camera is **off**.
2. Place the camera, battery, and tool on the flat surface.
3. Pick up the camera in one hand and place your thumb in the center of the WatchGuard label on the back plate of the camera.



4. Apply firm pressure with your thumb to reduce the pressure inside while you remove the screws.
5. Use your tool to gently remove all four screws.
6. Slide the slider clip off after removing the screws.

7. Release your thumb pressure and lift off the back plate of the camera.

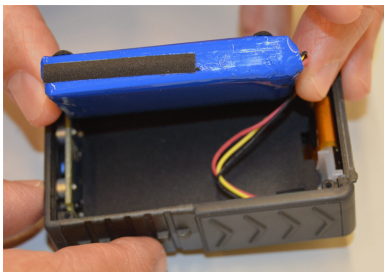


Removing and disconnecting the battery

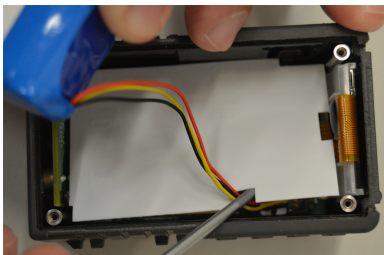
Be careful not to pull too hard when removing the battery. You do not want to stretch or pull the connector wire too strongly.

1. Use your tool then your hand to lift the battery from the case.

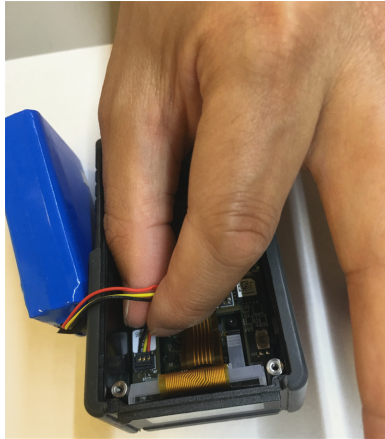
Do not pull hard enough to disconnect the connector.



2. Remove the battery insulator from the housing of the extended and Wi-Fi camera.



3. Grasp the wire close to the connector and gently pull the connector straight up until it comes off.



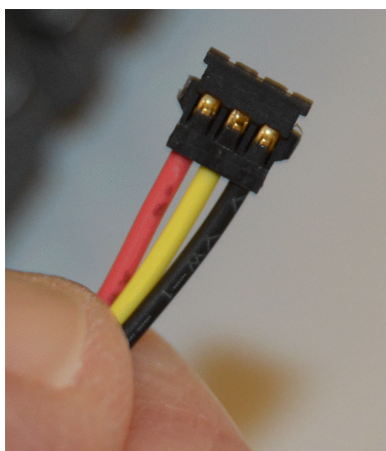
Replace the Battery

After you have removed the battery and disconnected the connector, replace the battery and the back plate.

Replacing the battery

Follow these steps to replace your battery.

1. Grasp the wires.

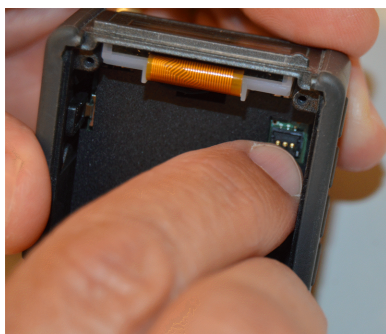


2. Align the top of the connector with the gold contacts in the camera. Ensure that the connector is flat before you gently push the connector down.

You will feel a click when it is in place.

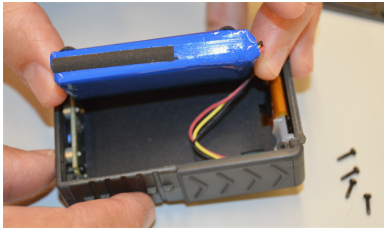


Note: Do not bend the wires at the connector.



3. Replace the battery insulator for the extended and WiFi VISTA cameras.

4. Place the battery in the camera so that the connector wires are at the top of the camera.



Ensure that the wires lay flat and are not twisted.

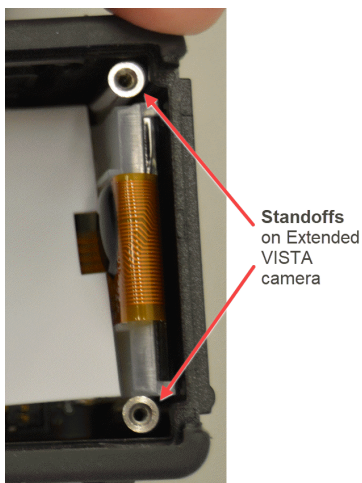
5. Replace the slider clip.
6. Replace the camera back plate.
7. Place your thumb in the center of the WatchGuard label and apply gentle, but firm, pressure.



8. Insert the screws and **loosely** tighten in a criss-cross pattern until the screws are seated snugly.

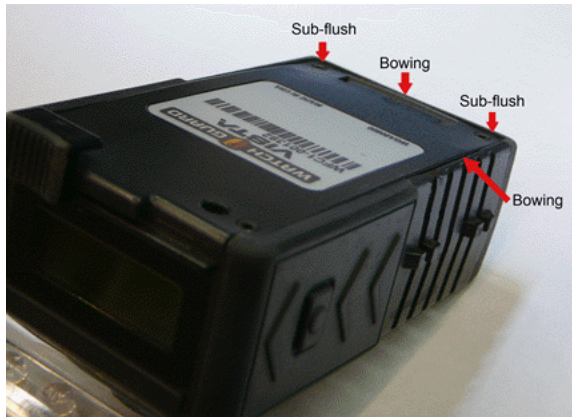


Important! Do not over tighten the screws. Over tightening can cause the standoffs to break in the extended camera.



If the standoffs in the Extended and Wi-Fi camera break loose, you must return the camera to WatchGuard to have the housing replaced.

Problems you might see if you over-tighten the back cover:



10. Power on the camera to test the replacement battery.