

A8 DMR Portable Radio

en-US

zh-CN

无线电发射设备型号核准代码会在设备标签上注明

NOVEMBER 2020



Contents

Legal and Compliance Statements.....	4
Copyrights.....	4
Computer Software Copyrights.....	4
Important Safety Information.....	5
Warranty and Service Support.....	5
Chapter 1: Read Me First.....	7
Chapter 2: Radio Overview.....	8
2.1 Programmable Buttons.....	9
2.1.1 Assignable Radio Functions.....	9
2.2 LED Indications.....	9
Chapter 3: Getting Started.....	11
3.1 Charging the Battery.....	11
3.2 Attaching and Removing the Battery.....	11
Attaching the Battery.....	11
Removing the Battery.....	11
3.3 Attaching and Removing the Antenna.....	12
Attaching the Antenna.....	12
Removing the Antenna.....	12
3.4 Attaching and Removing the Belt Clip.....	13
Attaching the Belt Clip.....	13
Removing the Belt Clip.....	13
3.5 Attaching the Universal Connector Cover.....	13
3.6 Removing the Universal Connector Cover.....	14
3.7 Turning the Radio On.....	14
3.8 Turning the Radio Off.....	14
3.9 Adjusting the Volume.....	14
Chapter 4: Time-Out Timer.....	15
Chapter 5: Selecting Channels.....	16
Chapter 6: Calls.....	17
6.1 Group Calls.....	17
6.1.1 Making Group Calls.....	17
6.1.2 Responding to Group Calls.....	17
6.2 Private Calls	17
6.2.1 Making Private Calls.....	18
6.2.2 Responding to Private Calls.....	18

6.3 All Calls.....	18
6.3.1 Making All Calls.....	18
Chapter 7: Call Alert Operation.....	19
7.1 Making Call Alerts.....	19
7.2 Responding to Call Alerts.....	19
Chapter 8: Talkaround.....	20
8.1 Toggling Between Repeater and Talkaround Modes.....	20
Chapter 9: Monitor Feature	21
9.1 Monitoring Channels.....	21
Chapter 10: Scan.....	22
10.1 Turning Scan On or Off	22
10.2 Responding to Transmissions During Scanning.....	22
10.3 Deleting Nuisance Channels.....	22
Chapter 11: Initiating Radio Enable.....	24
Chapter 12: Initiating Radio Disable.....	25
Chapter 13: Initiating Remote Monitor.....	26
Chapter 14: Authorized Accessories List.....	27

Legal and Compliance Statements

Copyrights

The Motorola Solutions products described in this document may include copyrighted Motorola Solutions computer programs. Laws in the United States and other countries preserve for Motorola Solutions certain exclusive rights for copyrighted computer programs. Accordingly, any copyrighted Motorola Solutions computer programs contained in the Motorola Solutions products described in this document may not be copied or reproduced in any manner without the express written permission of Motorola Solutions.

© 2020 Motorola Solutions, Inc. All Rights Reserved.

No part of this document may be reproduced, transmitted, stored in a retrieval system, or translated into any language or computer language, in any form or by any means, without the prior written permission of Motorola Solutions, Inc.

Furthermore, the purchase of Motorola Solutions products shall not be deemed to grant either directly or by implication, estoppel or otherwise, any license under the copyrights, patents or patent applications of Motorola Solutions, except for the normal non-exclusive, royalty-free license to use that arises by operation of law in the sale of a product.

Disclaimer

Please note that certain features, facilities, and capabilities described in this document may not be applicable to or licensed for use on a specific system, or may be dependent upon the characteristics of a specific subscriber unit or configuration of certain parameters. Please refer to your Motorola Solutions contact for further information.

Trademarks

Mag One, MOTOROLA SOLUTIONS, the Stylized M Logo are registered in the U.S. Patent and Trademark Office. All other products and service names are the property of their respective owners.

European Union (EU) Waste of Electrical and Electronic Equipment (WEEE) directive



■ The European Union's WEEE directive requires that products sold into EU countries must have the crossed out trash bin label on the product (or the package in some cases).

As defined by the WEEE directive, this cross-out trash bin label means that customers and end-users in EU countries should not dispose of electronic and electrical equipment or accessories in household waste.

Customers or end-users in EU countries should contact their local equipment supplier representative or service centre for information about the waste collection system in their country.

Computer Software Copyrights

The Motorola Solutions products described in this manual may include copyrighted Motorola Solutions computer programs stored in semiconductor memories or other media. Laws in the United States and other countries preserve for Motorola Solutions certain exclusive rights for copyrighted computer programs including, but not limited to, the exclusive right to copy or reproduce in any form the copyrighted computer program. Accordingly, any copyrighted Motorola Solutions computer programs contained in the Motorola Solutions products described in this manual may not be copied, reproduced,

modified, reverse-engineered, or distributed in any manner without the express written permission of Motorola Solutions. Furthermore, the purchase of Motorola Solutions products shall not be deemed to grant either directly or by implication, estoppel, or otherwise, any license under the copyrights, patents or patent applications of Motorola Solutions, except for the normal non-exclusive license to use that arises by operation of law in the sale of a product.

The AMBE+2™ voice coding Technology embodied in this product is protected by intellectual property rights including patent rights, copyrights and trade secrets of Digital Voice Systems, Inc.

This voice coding Technology is licensed solely for use within this Communications Equipment. The user of this Technology is explicitly prohibited from attempting to decompile, reverse engineer, or disassemble the Object Code, or in any other way convert the Object Code into a human-readable form.

U.S. Pat. Nos. #5,870,405, #5,826,222, #5,754,974, #5,701,390, #5,715,365, #5,649,050, #5,630,011, #5,581,656, #5,517,511, #5,491,772, #5,247,579, #5,226,084 and #5,195,166.

Important Safety Information

RF Energy Exposure and Product Safety Guide for Portable Two-Way Radios

ATTENTION!

This radio is restricted to Occupational use only. Before using the radio, read the RF Energy Exposure and Product Safety Guide for Portable Two-Way Radios which contains important operating instructions for safe usage and RF energy awareness and control for Compliance with applicable standards and Regulations.

Any modification to this device, not expressly authorized by Motorola Solutions, may void the user's authority to operate this device.

Warranty and Service Support

Motorola Solutions offers long-term support for its products. This support includes full exchange and/or repair of the product during the warranty period, and service/repair or spare parts support out of warranty.

Warranty Period and Return Instructions

The terms and conditions of warranty are defined fully in the Motorola Solutions Dealer, Distributor, or Reseller contract. These conditions may change from time to time and the following notes are for guidance purposes only. In instances where the product is covered under a "return for replacement" or "return for repair" warranty, a check of the product should be performed prior to shipping the unit back to Motorola Solutions. This is to ensure that the product has been correctly programmed or has not been subjected to damage outside the terms of the warranty.

Radios	12 Months
Accessories	6 Months

Prior to shipping any radio back to the appropriate Motorola Solutions warranty depot, please contact Customer Resources or your Motorola Solutions dealer, distributor, or reseller. All returns must be accompanied by a Warranty Claim Form, available from your Customer Service representative or Motorola Online (MOL) or your Motorola Solutions dealer, distributor, or reseller. Products should be shipped back in the original packaging, or correctly packaged to ensure no damage occurs in transit.

After Warranty Period

After the Warranty period, Motorola Solutions continues to support its products in two ways:

- Motorola Solutions Managed Technical Services (MTS) offers a repair service to both end users and dealers at competitive prices.
- MTS supplies individual parts and modules that can be purchased by dealers who are technically capable of performing fault analysis and repair.

Chapter 1

Read Me First

This user guide covers the basic operations of your radios.

Notations Used in This Manual

Throughout the text in this publication, you notice the use of **Warning**, **Caution**, and **Notice**. These notations are used to emphasize that safety hazards exist, and the care that must be taken or observed.



WARNING: An operational procedure, practice, or condition, and so on, which may result in injury or death if not carefully observed.



CAUTION: An operational procedure, practice, or condition, and so on, which may result in damage to the equipment if not carefully observed.



NOTICE: An operational procedure, practice, or condition, and so on, which is essential to emphasize.

Feature and Service Availability

Your dealer or administrator may have customized your radio for your specific needs.



NOTICE: Not all features in the manual are available in your radio. Contact your dealer or administrator for more information.

You can consult your dealer or system administrator about the following:

- What are the functions of each button?
- Which optional accessories may suit your needs?
- What are the best radio usage practices for effective communication?
- What maintenance procedures promote longer radio life?

Chapter 2

Radio Overview

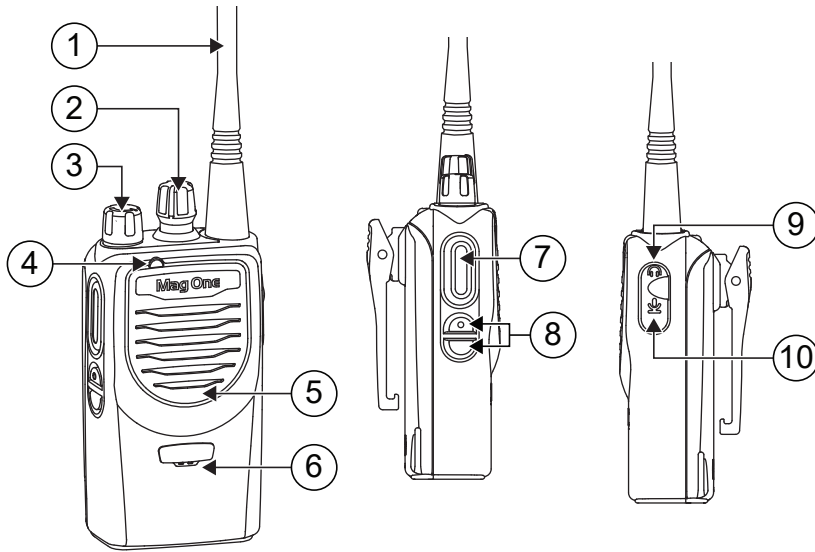


Table 1: Radio View Callouts

No	Description
1	Antenna
2	Channel Selector Knob
3	On/Off/Volume Control Knob
4	LED Indicator
5	Speaker
6	Microphone
7	PTT Button
8	Programmable Button
9	Audio Connector
10	Programming Port

2.1

Programmable Buttons

You can program the programmable buttons as shortcuts to radio functions or preset channels or groups. Depending on the duration of a button press, the programmable buttons function differently.

Table 2: Button Press Duration

Action	Description
Short press	Press and release for less than 1 second.
Long press	Press and hold for 4 seconds or less depending on the settings through the Customer Programming Software (CPS).

2.1.1

Assignable Radio Functions

You can assign a list of radio functions to the programmable buttons.

Table 3: Types of Programmable Functions

Function	Description
All Alert Tones On/Off	Allows you to toggle all tones and alerts on or off.
Battery Indicator	Allows you to indicate battery strength by using the LED Indicator.
High/Low Power	Allows you to toggle transmit power level between high and low.
Monitor	Allows you to monitor a channel.
Nuisance Delete	Allows you to temporarily remove an unwanted channel, except for the Selected Channel, from the scan list. The Selected Channel refers to the selected zone or channel combination from which scan is initiated.
One Touch Access	Allows you to directly initiate a predefined Private Call, Group Call, Call Alert, Remote Monitor, and Radio Enable/Disable.
Repeater/Talkaround	Allows you to toggle between using a repeater and communicating directly with another radio.
Scan On/Off	Allows you to toggle scan on or off.
Tight/Normal Squelch	Allows you to toggle squelch level between tight and normal.

2.2

LED Indications

The LED Indicator shows the operational status of your radio. A qualified technician can permanently disable the LED indication by preprogramming it.

Table 4: LED Indications

Indication	Status
Solid Red	The radio is transmitting.
Solid Yellow	The radio is receiving wanted signal.

Indication	Status
Solid Green	The radio is receiving unwanted signal.
Blinking Red	The battery capacity is low.
Blinking Yellow	The radio is receiving alert signal.
Blinking Green	The radio is scanning.

Chapter 3

Getting Started

Getting Started provides instructions to prepare your radio for use.

3.1

Charging the Battery

Your radio is powered by a Lithium-Ion (Li-Ion) battery.

Prerequisites: Turn off your radio when charging.

Procedure:

- To comply with warranty terms and avoid damages, charge the battery using an authorized charger.
- Charge a new battery 14 to 16 hours before initial use for best performance.
Batteries charge best at room temperature.

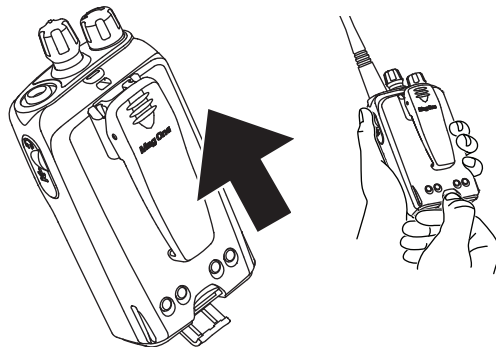
3.2

Attaching and Removing the Battery

Attaching the Battery

Procedure:

- 1 Slide the battery into the battery compartment.

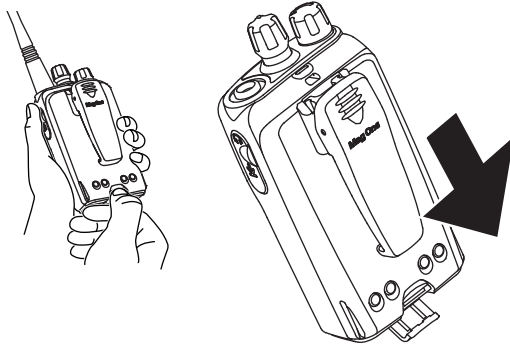


- 2 Flip the battery latch close and press it onto the battery until it locks in place.

Removing the Battery

Procedure:

- 1 Turn off your radio.
- 2 Flip the battery latch open.
- 3 Slide the battery out of the battery compartment and lift it.



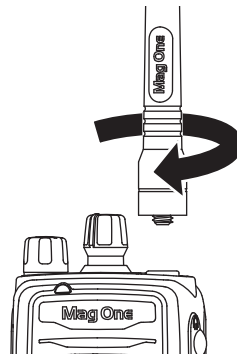
3.3

Attaching and Removing the Antenna

Attaching the Antenna

Procedure:

- 1 Set the antenna in the receptacle.
- 2 Turn the antenna clockwise.

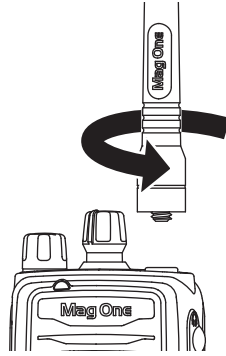


NOTICE: Fastening the antenna blocks water and dust from entering the radio.

Removing the Antenna

Procedure:

- 1 Turn the antenna counterclockwise.
- 2 Remove the antenna from the receptacle.



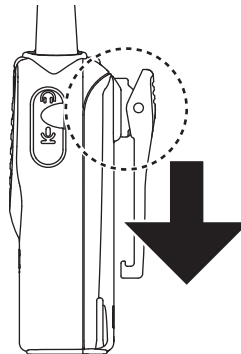
3.4

Attaching and Removing the Belt Clip

Attaching the Belt Clip

Procedure:

Align the grooves on the clip with the grooves on the battery and press it downwards until it clicks.



Removing the Belt Clip

Procedure:

- 1 To remove the clip, press the belt clip tab away from the battery.
- 2 Slide the clip upwards and away from the radio.

3.5

Attaching the Universal Connector Cover

When and where to use: Replace the universal connector cover or dust cover when the universal connector is not in use.



CAUTION: IP54 rating is assured only when the universal connector cover is attached.

Procedure:

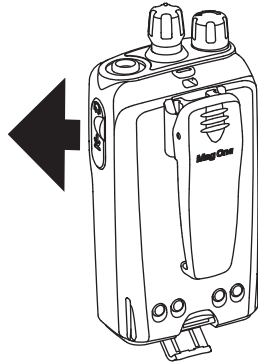
Insert the slanted end of the cover into the slots above the universal connector.

3.6

Removing the Universal Connector Cover

Procedure:

- 1 Remove the universal connector cover or dust cover by pulling the cover out.



CAUTION: Close the dust cover when the universal connector is not in use.

3.7

Turning the Radio On

Procedure:

Rotate the **On/Off/Volume Control** knob clockwise to turn on the radio.

If successful, your radio shows the following indications:

- A tone sounds.



NOTICE: If the Tones/Alerts function is disabled, there is no tone upon powering up.

•

Postrequisites: If your radio does not power up, check your battery. Make sure that the battery is charged and properly attached. Contact your dealer if your radio still does not power up.

3.8

Turning the Radio Off

Procedure:

Rotate the **On/Off/Volume Control** knob anti clockwise to turn off the radio.

3.9

Adjusting the Volume

Procedure:

Turn the **Volume** knob to adjust the volume of the radio.

Chapter 4

Time-Out Timer

Time-Out Timer sets a the maximum duration for a transmission. Your system administrator can set the time-out time for a channel through the radio software.

Before your radio reaches the time-out time, a ten-second warning beep sounds.

When your radio reaches the time-out time, your radio stops transmitting and shows the following indications:

- A tone sounds.
- The red LED extinguishes.

To resume transmission, you must release the **PTT** button and wait for the penalty timer to expire.

Chapter 5

Selecting Channels

Your radio supports up to 32 channels and 2 zones. Each channel can be programmed with different features that support different groups of users. Each zone can be programmed with 16 channels.

Procedure:

- 1 Press the programmed Zone Selection button to switch between zones.
- 2 Select channels by toggling the **Channel Selector** knob.

Your radio indicates the channel number through voice announcement. If the channel is not programmed, an error tone sounds.

Chapter 6

Calls

Depending on the type of call, you can make, receive, and respond to calls in both Conventional Analog and Digital mode.

Your radio supports the following types of calls:

- [Group Calls](#)
- [Private Calls](#)
- [All Calls](#)

6.1

Group Calls

Group Calls are calls from an individual radio to a group of radios. To communicate in a group, your radio must first be configured as a part of the talkgroup.

6.1.1

Making Group Calls

Procedure:

- 1 To select a channel with an active group ID, toggle the **Channel Selector** knob.
- 2 To call, press the **PTT** button.
- 3 To listen, release the **PTT** button.

If your radio does not detect voice activity for a predetermined period, the call ends.

6.1.2

Responding to Group Calls

When and where to use: When you receive Group Calls, your radio shows the following indications:

- The green LED illuminates.
- Your radio unmutes and the incoming call sounds through the speaker.

Procedure:

- 1 To respond, press the **PTT** button.
- 2 To listen, release the **PTT** button.

6.2

Private Calls

Private Calls are calls from an individual radio to another individual radio.

6.2.1

Making Private Calls

Procedure:

- 1 To select a channel with an active subscriber ID, toggle the **Channel Selector** knob.
- 2 To call, press the **PTT** button.
- 3 Wait for the Talk Permit Tone to end, and speak into the microphone.
- 4 To listen, release the **PTT** button.

If your radio does not detect voice activity for a predetermined period, the call ends.

6.2.2

Responding to Private Calls

When and where to use: When you receive Private Calls, your radio shows the following indications:

- The green LED illuminates.
- Your radio unmutes and the incoming call sounds through the speaker.

Procedure:

- 1 To respond, press the **PTT** button.
- 2 Wait for the Talk Permit Tone to end, and speak into the microphone.
- 3 To listen, release the **PTT** button.

If your radio does not detect voice activity for a predetermined period, the call ends.

6.3

All Calls

All Calls are one-way calls from an individual radio to all radios on a channel. All Calls are used for making important announcements. The recipients on the channel cannot respond to All Calls.

When you receive All Calls, your radio shows the following indications:

- A tone sounds.
- The green LED illuminates.
- Your radio unmutes and the incoming call sounds through the speaker.

All Calls do not wait for a predetermined period before ending. You can only continue with programmed button functions after the All Call ends. If you switch to a different channel during an All Call, your radio stops receiving the call.

6.3.1

Making All Calls

Procedure:

- 1 To select a channel with an active group ID, toggle the **Channel Selector** knob.
- 2 To call, press the **PTT** button.

Chapter 7

Call Alert Operation

Call Alert paging enables you to alert a specific radio user to call you back.

7.1

Making Call Alerts

Procedure:

Press the programmed **One Touch Access** button.

If the call alert acknowledgment is received, a positive tone sounds.

If the call alert acknowledgment is not received, a negative tone sounds.

7.2

Responding to Call Alerts

When and where to use: When you receive a Call Alert, your radio shows the following indications:

- A repetitive tone sounds.
- The yellow LED blinks.

Procedure:

To respond, press the **PTT** button within four seconds.

Chapter 8

Talkaround

This feature allows you to continue communicating when your repeater is non-operational, or when your radio is out of range from the repeater but within the talk range of other radios.

The talkaround setting is retained even after powering down.

8.1

Toggling Between Repeater and Talkaround Modes

Procedure:

Press the programmed **Repeater/Talkaround** button.

If a positive tone sounds, your radio is in talkaround mode.

If a negative tone sounds, your radio is in repeater mode.

Chapter 9

Monitor Feature

The feature allows you to ensure that a channel is free before transmitting.

9.1

Monitoring Channels

Procedure:

Press the programmed **Monitor** button and hold the button to continue monitoring the channel.

If the channel is in use, your radio shows the following indications:

- You hear radio activity.
- The yellow LED illuminates.

If the monitored channel is free, your radio shows the following indications:

- You hear "white noise".
- The yellow LED illuminates.

Postrequisites: To stop monitoring the channel, release the programmed **Monitor** button.

Chapter 10

Scan

Your radio scans through the programmed scan list for the current channel looking for voice activity when you start a scan.

Your radio also performs dual-mode scan. If you are on a digital channel, and your radio locks onto an analog channel, your radio automatically switches from digital mode to analog mode during the call. If you are on an analog channel, and your radio locks onto a digital channel, your radio automatically switches from analog mode to digital mode during the call.

Table 5: Scan types

Type	Description
Main Channel Scan (Manual)	Your radio scans all the channels or groups in your scan list. When scanning, your radio may, depending on the settings, automatically start on the last scanned active channel or group, or on the channel where scan was initiated.
Auto Scan (Automatic)	Your radio automatically starts scanning when you select a channel or group that has Auto Scan enabled.

10.1

Turning Scan On or Off

Procedure:

If Scan is enabled, your radio shows the following indications:

- A positive tone sounds.

If Scan is disabled, your radio shows the following indications:

- A negative tone sounds.

10.2

Responding to Transmissions During Scanning

During scanning, your radio stops on a channel or group where activity is detected. The radio stays on that channel for a programmed duration known as hang time.

Procedure:

- 1 Press the **PTT** button.
- 2 To listen, release the **PTT** button.

10.3

Deleting Nuisance Channels

If a channel continually generates unwanted calls or noise (termed a "nuisance" channel), you can temporarily remove the unwanted channel from the scan list. This capability does not apply to the channel designated as the Selected Channel.

Procedure:

- 1** Press the programmed **Nuisance Delete** button until you hear a tone.
- 2** Release the programmed **Nuisance Delete** button.

Chapter 11

Initiating Radio Enable

Procedure:

Press the programmed **One Touch Access - Radio Enable** button that you want to enable transmission from.

Your radio shows the following indications:

- A tone sounds.
- The red LED blinks once.

The receiving radio shows the following indications:

- A tone sounds.
- The LED extinguishes.

Chapter 12

Initiating Radio Disable

Procedure:

Press the programmed **One Touch Access - Radio Disable** button that you want to disable transmission from.

Your radio shows the following indications:

- A tone sounds.
- The red LED blinks once.

The receiving radio shows the following indications:

- The Talk Prohibit Tone sounds.
- The LED flickers.

Chapter 13

Initiating Remote Monitor

Procedure:

Press the programmed **One Touch Access - Remote Monitor** button that you want to enable transmission from.

Chapter 14

Authorized Accessories List

Table 6: Antennas

Part Number	Description
PMAE4104_	Mag One, UHF, 400–470 MHz, Wideband Antenna

Table 7: Battery

Part Number	Description
PMNN4534_	Mag One Li-Ion, 2400 mAH Battery

Table 8: Cable

Part Number	Description
PMDN4077_	Programming Cable

Table 9: Carry Device

Part Number	Description
PMLN4743_	Mag One Spring Belt Clip

Table 10: Charger

Part Number	Description
PMPN4203_	Mag One Charger Desktop Single Unit INT PS 240V China

Table 11: Earbuds and Earpieces

Part Number	Description
PMLN6534_	Mag One Earbud with In-Line Microphone/PTT/VOX Switch
PMLN6531_	Mag One Ear Receiver with In-Line Microphone/PTT/VOX Switch
PMLN6532A	Mag One Swivel Earpiece with Microphone/PTT
PMLN6536A	2-Wire with Transparent Tube, Black

Table 12: Headset and Headset Accessory

Part Number	Description
PMLN6542_	Mag One Ultra-Lightweight Headset with Boom Microphone and In-Line PTT Switch

Table 13: Remote Speaker Microphone

Part Number	Description
PMMN4092_	Mag One Remote Speaker Microphone

A8 DMR 便携式 对讲机

en-US

zh-CN

无线电发射设备型号核准代码会在设备标签上注明

11 月 2020 年



目录

法律及合规性声明.....	4
版权.....	4
计算机软件版权.....	4
重要安全信息.....	5
保修与服务支持.....	5
章节 1：使用须知.....	6
章节 2：对讲机概述.....	7
2.1 可预设按钮.....	8
2.1.1 可分配的对讲机功能.....	8
2.2 LED 指示灯.....	8
章节 3：使用入门.....	10
3.1 为电池充电.....	10
3.2 安装和取出电池.....	10
安装电池.....	10
取出电池.....	10
3.3 安装和取下天线.....	11
安装天线.....	11
取下天线.....	11
3.4 安装和取下皮带夹.....	12
安装皮带夹.....	12
取下皮带夹.....	12
3.5 安装通用接口护盖.....	12
3.6 拔出通用接口护盖.....	13
3.7 打开对讲机.....	13
3.8 关闭对讲机.....	13
3.9 调节音量.....	13
章节 4：超时计时器.....	14
章节 5：选择信道.....	15
章节 6：呼叫.....	16
6.1 组呼.....	16
6.1.1 发起组呼.....	16
6.1.2 回复组呼.....	16
6.2 单呼.....	16
6.2.1 发起单呼.....	16
6.2.2 回复单呼.....	17

6.3 全呼.....	17
6.3.1 发起全呼.....	17
章节 7：呼叫提醒操作.....	18
7.1 发起呼叫提示.....	18
7.2 对呼叫提示做出响应.....	18
章节 8：脱网.....	19
8.1 在中继器和脱网模式之间切换.....	19
章节 9：监听功能	20
9.1 监听信道.....	20
章节 10：扫描.....	21
10.1 开启或关闭扫描.....	21
10.2 在扫描期间对发射做出响应.....	21
10.3 删除无用信道.....	21
章节 11：启动对讲机激活.....	22
章节 12：启动对讲机遥毙.....	23
章节 13：开始远程监听.....	24
章节 14：认可的附件列表.....	25

法律及合规性声明

版权

本文档中介绍的 **Motorola Solutions** 产品可能包含受版权保护的 **Motorola Solutions** 计算机程序。美国和其它国家/地区的法律为 **Motorola Solutions** 保留受版权保护的计算机程序的某些专有权利。因此，未经 **Motorola Solutions** 明确的书面许可，不得以任何方式对本文档中介绍的 **Motorola Solutions** 产品中包含的任何受版权保护的 **Motorola Solutions** 计算机程序进行拷贝或复制。

© 2020 Motorola Solutions, Inc. 保留所有权利。

未经 **Motorola Solutions, Inc.** 的事先书面许可，不得以任何形式或通过任何手段，复制、传播、在检索系统中存储本文档的任何部分，或将其翻译为任何语言或计算机语言。

此外，购买 **Motorola Solutions** 的产品未以禁止反言或其他方式，直接或暗示授予 **Motorola Solutions** 的版权、专利或者专利申请许可，产品销售过程中法律运用所引起的普通非专有、免版税许可除外。

免责声明

请注意，此文档中介绍的具体特点、设备和功能有可能不适用于或未授权给特定系统中使用，或者取决于特定无线用户设备的特性或特定参数的配置。请联系 **Motorola Solutions** 以获取详细信息。

商标

Mag One、**MOTOROLA SOLUTIONS**、标志性的 **M** 徽标已在美国专利商标局注册。所有其它产品或服务名称均为其各自所有者的财产。

欧盟 (EU) 废弃电子电气设备 (WEEE) 指令



■ 欧盟的 **WEEE** 指令要求销售到欧盟国家/地区的产品必须在产品上（有时是在包装上）张贴带叉号的垃圾箱标签。

根据 **WEEE** 指令的定义，此带叉号的垃圾箱标签表示欧盟国家/地区的客户和最终用户不得将此电子电气设备或附件作为生活垃圾处置。

欧盟国家/地区的客户或最终用户应联系当地的设备供应商代表或服务中心，以了解有关各个国家/地区废物收集系统的相关信息。

计算机软件版权

本手册所介绍的 **Motorola Solutions** 可能包括存储于半导体存储器或其他介质中的受版权保护的 **Motorola Solutions** 计算机程序。美国和其他国家/地区的法律保护 **Motorola Solutions** 的某些有版权的计算机程序的专有权利，包括但不限于以任何形式拷贝或复制有版权的计算机程序的权利。因此，在未经 **Motorola Solutions** 书面允许的情况下，不允许以任何形式对本手册所介绍的 **Motorola Solutions** 产品所包含的任何受版权保护的 **Motorola Solutions** 计算机程序进行拷贝、复制、修改、反向工程或分发。此外，购买 **Motorola Solutions** 的产品未以禁止反言或其他方式，直接或暗示授予 **Motorola Solutions** 的版权、专利或者专利申请许可，产品销售过程中法律运用所引起的普通非专有许可除外。

本产品中嵌入的 **AMBE+2™** 语音编码技术受知识产权保护，包括 **Digital Voice Systems, Inc.** 的专利权、版权和商业秘密。

该语音编码技术单独授权供该通信设备使用。明确禁止该技术用户对其进行反编译、逆向工程或拆解结果代码，或以任何其他方式将结果代码转换成人可读取的格式。

美国专利号：#5,870,405、#5,826,222、#5,754,974、#5,701,390、#5,715,365、#5,649,050、#5,630,011、#5,581,656、#5,517,511、#5,491,772、#5,247,579、#5,226,084 和 #5,195,166。

重要安全信息

便携式双向对讲机的射频能量辐射和产品安全指南

注意！

此对讲机仅限职业应用。在使用本对讲机之前，请阅读便携式双向对讲机的射频能量辐射和产品安全手册，其中包括安全操作说明以及射频能量信息和控制，以确保符合适用的标准和法规。

未经 **Motorola Solutions** 明确授权，对此设备所做的任何修改都可能导致用户无权操作此设备。

保修与服务支持

Motorola Solutions 对其产品提供长期支持。这一支持包括产品在保修期内的全部更换和/或维修，以及保修期外的服务/维修或备件支持。

保修期与返修说明

保修条款与条件在“**Motorola Solutions** 经销商、分销商或转销商”合同里有完整规定。具体条件会随时有所变化，以下内容仅供参考。对于享有“返回更换”或“返回修理”保证的产品，在将设备返回至 **Motorola Solutions** 之前应先对该产品进行检测。这样做是为了确认产品是否已经正确预设或是否属于保修条款以外的损坏。

对讲机	12 个月
附件	6 个月

在将任何对讲机返回至相应的 **Motorola Solutions** 维修点之前，请先联系客户资源部门或您的 **Motorola Solutions** 经销商、分销商或转销商。所有返回的产品必须随附保修申请表，此表格可从客户服务代表、**Motorola** 在线 (MOL) 或您的 **Motorola Solutions** 经销商、分销商或转销商处获取。产品送回时须带有原包装或包装正确，以保证在运输途中不受损坏。

保修期外服务

在保修期外，**Motorola Solutions** 以两种方式解决方案继续对其产品提供支持：

- **Motorola Solutions** 管理型技术服务部 (MTS) 负责以优惠价格向最终用户和经销商提供维修服务。
- **Motorola Solutions** 管理型技术服务部 (MTS) 提供具体的元器件和模块供有技术力量进行故障分析与维修的代理商购买。

章节 1

使用须知

本用户指南介绍对讲机的基本操作。

本手册中注解的使用

在本手册的全文中，您会注意到使用了一些**警告**、**小心**和**注意**。这些注解用于强调存在的安全隐患，提示您操作时应小心谨慎。



警告: 操作步骤、举措或状况等，如果不严格遵守，可能导致受伤或死亡。



小心: 操作步骤、举措或状况等，如果不严格遵守，可能导致设备损坏。



注意: 必须强调的操作步骤、举措或状况等。

功能和服务可用性

您的经销商或管理员可能已经针对您的具体需要对对讲机进行了定制。



注意: 手册中的所有功能并非都适用于对讲机。有关详细信息，请联系您的经销商或管理员。

您可以向您的经销商或系统管理员咨询以下事项：

- 每个按钮的功能是什么？
- 哪些可选附件可满足您的需求？
- 使用对讲机实现有效通信的最佳做法是什么？
- 怎样的维护过程可延长对讲机寿命？

章节 2

对讲机概述

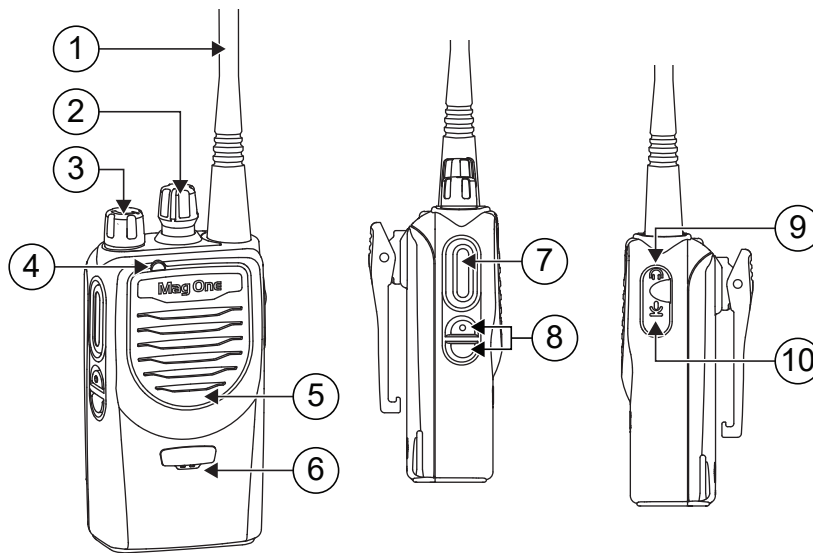


表 1：对讲机视图插图

否	说明
1	天线
2	信道选择旋钮
3	开/关/音量控制旋钮
4	LED 指示灯
5	扬声器
6	麦克风
7	PTT 按钮
8	可预设按钮
9	音频连接器
10	预设端口

2.1
可预设按钮

可以将可预设按钮预设为对讲机功能或者预设信道或组的快捷方式。根据按钮按下的持续时间，可预设按钮的功能会有所不同。

表 2：按钮按下持续时间

操作	说明
短按	按下然后松开少于 1 秒。
长按	按住不超过 4 秒，具体取决于通过客户编程软件 (CPS) 进行的设置。

2.1.1
可分配的对讲机功能

您可以将一组对讲机功能分配给可预设按钮。

表 3：可预设功能的类型

功能	说明
所有提示音开/关	允许您打开或关闭全部提示音和提示。
电池指示灯	允许您使用 LED 指示灯指示电池电量强度。
高/低功率	允许您在高功率和低功率之间切换对讲机的发射功率级别。
监听	允许您监听信道。
无用信道删除	允许您从扫描列表中暂时删除一个无用信道，但所选信道除外。所选信道是指发起扫描的所选区域或信道的组合。
单键接入	允许您直接发起预定义单呼、组呼、呼叫提示、远程监听和对讲机激活/遥毙。
中继器/脱网	允许您在使用中继器和直接与其他对讲机通信之间切换。
扫描开/关	允许您打开或关闭扫描。
强静噪/正常静噪	允许您在强静噪和正常静噪之间切换静噪级别。

2.2
LED 指示灯

LED 指示灯显示对讲机的工作状态。符合资质的技术人员可以通过预设来永久禁用 LED 指示灯。

表 4：LED 指示灯

指示	状态
红色长亮	对讲机正在发射。
黄色长亮	对讲机正在接收所需的信号。
绿色长亮	对讲机正在接收不需要的信号。
呈红色闪烁	电池电量低。
呈黄色闪烁	对讲机正在接收警报信号。

指示	状态
呈绿色闪烁	对讲机正在扫描。

章节 3

使用入门

“使用入门”提供有关为对讲机做好使用准备的说明。

3.1

为电池充电

本对讲机由锂离子电池供电。

前提条件：充电时请关闭对讲机。

过程：

- 为了遵守保修条款和防止损坏，请务必使用认可的充电器对电池充电。
- 为了获得最佳电池性能，初次使用时新电池充电时间应为 **14 到 16 小时**。
电池最好在室温下进行充电。

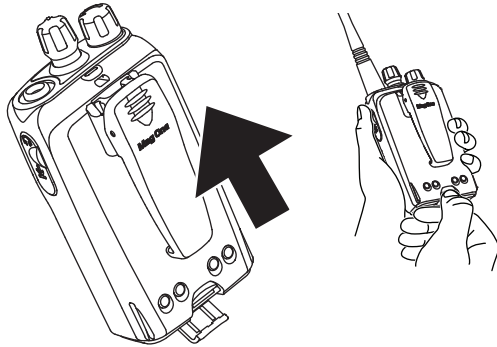
3.2

安装和取出电池

安装电池

过程：

- 1 将电池滑入电池盒中。

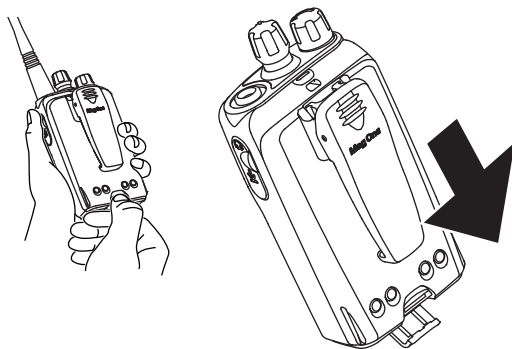


- 2 关闭电池门锁，然后将其按到电池上，直至锁定到位。

取出电池

过程：

- 1 关闭对讲机。
- 2 打开电池门锁。
- 3 将电池从电池盒中滑出并取下。



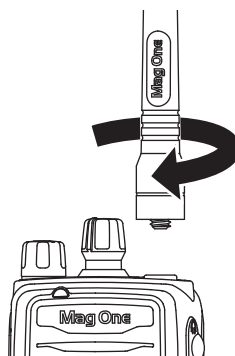
3.3

安装和取下天线

安装天线

过程：

- 1 将天线置入插孔中。
- 2 顺时针转动天线。

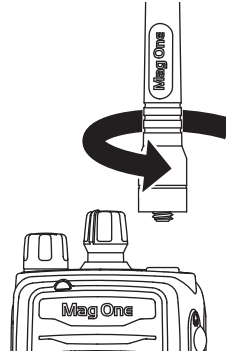


注意：固定天线可防止水和灰尘进入对讲机。

取下天线

过程：

- 1 逆时针转动天线。
- 2 从插孔中拆下天线。



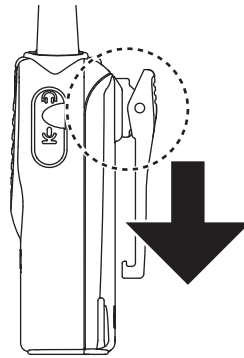
3.4

安装和取下皮带夹

安装皮带夹

过程：

将皮带夹上的凹槽与电池上的凹槽对齐并向下按，直到卡入到位。



取下皮带夹

过程：

- 1 要取下皮带夹，请按压皮带夹锁片，将其从电池上脱开。
- 2 将皮带夹向上推，使其从对讲机中滑出。

3.5

安装通用接口护盖

何时何处使用：在不使用通用接口时，请装回通用接口护盖或防尘罩。



小心：只有连接通用接口护盖时，才可确保 IP54 防护等级。

过程：

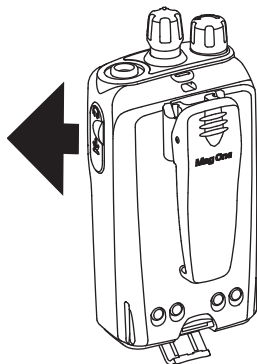
将护盖的倾斜端插入通用接口上方的卡槽中。

3.6

拔出通用接口护盖

过程：

- 1 拔出通用连接器盖或防尘盖，并将其卸下。



小心: 在不使用通用接口时，请关闭防尘罩。

3.7

打开对讲机

过程：

逆时针旋转**开/关/音量控制**旋钮可以打开对讲机。

如果成功开机，对讲机会显示以下指示：

- 系统将发出一声提示音。



注意: 如果禁用“提示音/提示”功能，则开机时没有提示音。

•

后期必要条件：如果您的对讲机没有开机，请检查电池。确保电池已充电并正确安装。如果对讲机仍没有开机，请与经销商联系。

3.8

关闭对讲机

过程：

逆时针旋转**开/关/音量控制**旋钮可以关闭对讲机。

3.9

调节音量

过程：

转动**音量**旋钮可调节对讲机的音量。

章节 4

超时计时器

超时计时器可设置最长的传输时长。您的系统管理员可以通过对讲机软件设置信道的超时时间。

在到达超时时间前，对讲机会发出十秒警告蜂鸣声。

在到达超时时间时，对讲机将停止传输并显示以下指示：

- 系统将发出一声提示音。
- 红色 LED 指示灯熄灭。

要继续传输，必须松开 **PTT** 按钮并等待“处罚定时器”到期。

章节 5

选择信道

您的对讲机最多支持 **32** 个信道和 **2** 个区域。每个信道均可使用不同的功能预设，从而支持不同的用户组。每个区域都可以预设为 **16** 个信道。

过程：

- 1 按下预设的区域选择按钮可以在区域之间切换。
- 2 通过切换**信道选择**旋钮选择信道。

您的对讲机通过语音提示表明信道编号。如果信道未进行预设，对讲机会发出错误提示音。

章节 6

呼叫

根据呼叫类型，您可以在传统模拟和数字模式下发起、接收和应答呼叫。

您的对讲机支持以下呼叫类型：

- 组呼
- 单呼
- 全呼

6.1

组呼

组呼是从单个对讲机到一组对讲机的呼叫。要在某个组中通信，必须先将对讲机配置为该通话组的成员。

6.1.1

发起组呼

过程：

- 1 要使用激活的组 ID 选择信道，请切换**信道选择**旋钮。
- 2 要呼叫，请按 **PTT** 按钮。
- 3 要接听，请松开 **PTT** 按钮。

如果对讲机在预定的时间段内未检测到语音活动，则呼叫结束。

6.1.2

回复组呼

何时何处使用：当收到组呼时，对讲机会显示以下指示：

- LED 指示灯呈绿色亮起。
- 对讲机取消静音，呼入电话会通过扬声器发出声音。

过程：

- 1 要应答呼叫，请按 **PTT** 按钮。
- 2 要接听，请松开 **PTT** 按钮。

6.2

单呼

单呼是由一台个体对讲机对另一台个体对讲机的呼叫。

6.2.1

发起单呼

过程：

- 1 要使用激活的用户 ID 选择信道，请切换**信道选择**旋钮。

- 2 要呼叫，请按 **PTT** 按钮。
- 3 等待通话许可音结束后，再对麦克风讲话。
- 4 要接听，请松开 **PTT** 按钮。

如果对讲机在预定的时间段内未检测到语音活动，则呼叫结束。

6.2.2

回复单呼

何时何处使用：当收到单呼时，对讲机会显示以下指示：

- LED 指示灯呈绿色亮起。
- 对讲机取消静音，呼入电话会通过扬声器发出声音。

过程：

- 1 要应答呼叫，请按 **PTT** 按钮。
- 2 等通话许可音结束后，再对麦克风讲话。
- 3 要接听，请松开 **PTT** 按钮。

如果对讲机在预定的时间段内未检测到语音活动，则呼叫结束。

6.3

全呼

全呼是从单个对讲机到某个信道上所有对讲机的单向呼叫。全呼用于发布重要通知。该信道上的接收者无法应答全呼。

当收到全呼时，对讲机会显示以下指示：

- 将发出一声提示音。
- LED 指示灯呈绿色亮起。
- 对讲机取消静音，呼入电话会通过扬声器发出声音。

全呼不会等待预定时间，会直接终止。全呼结束后，只能使用预设的按钮功能继续。如果在全呼期间切换到另一个信道，对讲机将停止接收呼叫。

6.3.1

发起全呼

过程：

- 1 要使用激活的组 ID 选择信道，请切换**信道选择**旋钮。
- 2 要呼叫，请按 **PTT** 按钮。

章节 7

呼叫提醒操作

呼叫提示使您可以提示一个具体的对讲机用户回呼您。

7.1

发起呼叫提示

过程：

按预设的**单键接入**按钮。

如果接收到呼叫提示确认，对讲机将发出一声确定提示音。

如果没有接收到呼叫提示确认，对讲机将发出一声否定提示音。

7.2

对呼叫提示做出响应

何时何处使用：当收到呼叫提示时，对讲机会显示以下指示：

- 将发出一声重复音。
- 黄色 LED 指示灯闪烁。

过程：

要应答，请在四秒钟内按下 **PTT** 按钮。

章节 8

脱网

此功能可让您在下列情况下继续通信：中继器不工作时，或对讲机超出中继器范围但位于其他对讲机的通话范围内时。

即使在关机后，仍保持脱网设置。

8.1

在中继器和脱网模式之间切换

过程：

按预设的**中继器/脱网**按钮。

如果听到确定提示音，则对讲机处于脱网模式。

如果听到否定提示音，则对讲机处于中继器模式。

章节 9

监听功能

使用该功能，可以确保发射之前信道空闲。

9.1

监听信道

过程：

按住预设的**监听**按钮，继续监听信道。

如果信道在使用中，对讲机会显示以下指示：

- 您听到对讲机活动。
- 黄色 LED 指示灯亮起。

如果受监听的信道可用，对讲机会显示以下指示：

- 您听到“白噪音”。
- 黄色 LED 指示灯亮起。

后期必要条件：要停止监听信道，请松开预设的**监听**按钮。

章节 10

扫描

在启动扫描时，对讲机会扫描当前信道的预设扫描列表来查看是否有语音活动。

您的对讲机也可执行双模式扫描。如果您位于一个数字信道上，而您的对讲机锁定了一个模拟信道，则在呼叫过程中，对讲机会自动从数字模式切换为模拟模式。如果您位于一个模拟信道上，而您的对讲机锁定了一个数字信道，则在呼叫过程中，对讲机会自动从模拟模式切换为数字模式。

表 5：扫描类型

类型	说明
主信道扫描（手动）	对讲机可扫描您的扫描列表中的所有信道或通话组。在扫描时，根据设置不同，对讲机可自动从最后一个被扫描的活动信道或通话组开始，或从开启扫描的信道开始。
自动扫描（自动）	当您选择一个已经激活自动扫描的信道或通话组时，对讲机自动开始扫描。

10.1

开启或关闭扫描

过程：

如果扫描已启用，对讲机会显示以下指示：

- 设备会发出一声确定提示音。

如果扫描已禁用，对讲机会显示以下指示：

- 设备会发出一声否定提示音。

10.2

在扫描期间对发射做出响应

在扫描过程中，若检测到活动的信道或通话组，对讲机将停止。对讲机在预设的时限内保持在该信道，该时限被称为“闲置时间”。

过程：

- 1 按 **PTT** 按钮。
- 2 要接听，请松开 **PTT** 按钮。

10.3

删除无用信道

如果某个信道连续出现无用呼叫或噪声（称为“无用”信道），您可以暂时将无用信道从扫描列表中删除。该功能不适用于已指定为所选信道的信道。

过程：

- 1 按下预设的**无用信道删除**按钮，直至听到提示音。
- 2 松开预设的**无用信道删除**按钮。

章节 11

启动对讲机激活

过程：

按下要启用传输的预设**单键接入 - 对讲机激活**按钮。

对讲机会显示以下指示：

- 系统将发出一声提示音。
- LED 指示灯呈红色闪烁一次。

接收对讲机显示以下指示：

- 系统将发出一声提示音。
- LED 指示灯熄灭。

章节 12

启动对讲机遥毙

过程：

按下要禁用传输的预设**单键接入 - 对讲机遥毙**按钮。

对讲机会显示以下指示：

- 系统将发出一声提示音。
- LED 指示灯呈红色闪烁一次。

接收对讲机显示以下指示：

- 发出通话禁止提示音。
- LED 指示灯闪烁。

章节 13

开始远程监听

过程：

按下要启用传输的预设**单键接入 - 远程监听**按钮。

章节 14

认可的附件列表

表 6：天线

部件号	说明
PMAE4104_	Mag One、UHF、400 – 470 MHz, 宽带天线

表 7：电池

部件号	说明
PMNN4534_	Mag One 2400 mAH 锂离子电池

表 8：电缆

部件号	说明
PMDN4077_	编程电缆

表 9：携带设备

部件号	说明
PMLN4743_	Mag One 弹簧皮带夹

表 10：充电器

部件号	说明
PMPN4203_	Mag One 充电器桌面用单座 INT PS 240V 中国

表 11：耳塞和耳机

部件号	说明
PMLN6534_	带内联麦克风/PTT/声控发射开关的 Mag One 耳塞
PMLN6531_	带内联麦克风/PTT/声控发射开关的 Mag One 耳塞听筒
PMLN6532A	带麦克风/PTT 的 Mag One 旋转耳机
PMLN6536A	双线, 带透明管, 黑色

表 12：耳机和耳机附件

部件号	说明
PMLN6542_	带悬臂式麦克风和线控 PTT 开关的 Mag One 超轻型耳机

表 13 ： 远程扬声器麦克风

部件号	说明
PMMN4092_	Mag One 远程扬声器麦克风