



PMLN8332A Vehicle Mount for Operations Critical Wireless Remote Control Pod, WP300 Quick Start Guide

AUGUST 2021

© 2021 Motorola Solutions, Inc. All rights reserved



MN008432A01-AA

Contents

Intellectual Property and Regulatory Notices.....	3
Safety and Legal.....	4
Product Safety and RF Exposure Compliance.....	4
Acoustic Safety.....	4
Important Information.....	4
Open Source Software Legal Notices.....	5
Service and Warranty.....	6
Warranty Exclusion.....	6
Chapter 1: Assembling Vehicle Mount to Vehicle Handlebar-Cable Tie.....	7
Chapter 2: Assembling Vehicle Mount to Vehicle Handlebar-Velcro Strap.....	8
Chapter 3: Inserting BT POD to Vehicle Mount.....	9
Chapter 4: Removing BT POD from Vehicle Mount.....	10

Intellectual Property and Regulatory Notices

Copyrights

The Motorola Solutions products described in this document may include copyrighted Motorola Solutions computer programs. Laws in the United States and other countries preserve for Motorola Solutions certain exclusive rights for copyrighted computer programs. Accordingly, any copyrighted Motorola Solutions computer programs contained in the Motorola Solutions products described in this document may not be copied or reproduced in any manner without the express written permission of Motorola Solutions.

No part of this document may be reproduced, transmitted, stored in a retrieval system, or translated into any language or computer language, in any form or by any means, without the prior written permission of Motorola Solutions, Inc.

Trademarks

MOTOROLA, MOTO, MOTOROLA SOLUTIONS, and the Stylized M Logo are trademarks or registered trademarks of Motorola Trademark Holdings, LLC and are used under license. All other trademarks are the property of their respective owners.

License Rights

The purchase of Motorola Solutions products shall not be deemed to grant either directly or by implication, estoppel or otherwise, any license under the copyrights, patents or patent applications of Motorola Solutions, except for the normal non-exclusive, royalty-free license to use that arises by operation of law in the sale of a product.

Open Source Content

This product may contain Open Source software used under license. Refer to the product installation media for full Open Source Legal Notices and Attribution content.

European Union (EU) Waste of Electrical and Electronic Equipment (WEEE) Directive



The European Union's WEEE directive requires that products sold into EU countries must have the crossed out trash bin label on the product (or the package in some cases).

As defined by the WEEE directive, this cross-out trash bin label means that customers and end-users in EU countries should not dispose of electronic and electrical equipment or accessories in household waste.

Customers or end-users in EU countries should contact their local equipment supplier representative or service centre for information about the waste collection system in their country.

Disclaimer

Please note that certain features, facilities, and capabilities described in this document may not be applicable to or licensed for use on a specific system, or may be dependent upon the characteristics of a specific mobile subscriber unit or configuration of certain parameters. Please refer to your Motorola Solutions contact for further information.

© 2021 Motorola Solutions, Inc. All Rights Reserved

Safety and Legal

This section provides the safety and legal information for this product.

Product Safety and RF Exposure Compliance

CAUTION:

Before using this product, read the RF Energy Exposure and Product Safety Guide that shipped with the radio which contains instructions for safe usage and RF energy awareness and control for compliance with applicable standards and regulation.

Acoustic Safety

Exposure to loud noises from any source for extended periods of time may temporarily or permanently affect your hearing. The louder the radio volume, the less time is required before your hearing could be affected. Hearing damage from loud noise is sometimes undetectable at first and can have a cumulative effect. To protect your hearing:

- Use the lowest volume necessary to do your job.
- Turn up the volume only if you are in noisy surroundings.
- Turn down the volume before wearing the earpiece.
- Limit the amount of time you use headsets or earpieces at high volume.
- When using the radio without a headset or earpiece, do not place the radio speaker directly against your ear.
- If you experience hearing discomfort, ringing in your ears, or speeches that are muffled, you should stop listening to your radio through your headset or earpiece, and have your hearing checked by your doctor. To change the volume level, refer to Radio Product Safety Leaflet or Costumer Programming Software (CPS) for Surveillance extra loud (xL) Kit Configurations.

Important Information

- Do not charge your accessory in temperature below 0 °C (32 °F) or above 45 °C (113 °F).
- Do not store your accessory in direct sunlight or where expected temperatures can exceed this range such as inside a parked car.
- Storing your fully charged accessory in high temperature conditions may permanently reduce the life of the internal battery.
- Battery life may temporarily shorten in low-temperature conditions.
- The Remote Control Pod should be stored in temperatures between -10 °C (14 °F) and 30 °C (86 °F) to minimize permanent battery capacity loss.



WARNING:

- To prevent injury, do not disassemble, puncture, or crush the Pod because this action can cause the battery to short-circuit.
- Do not expose or throw the Pod into heat or fire.
- Do not dispose the Pod into household waste.
- Do not fill the audio jack and USB charging port with water. If water enters the audio jack and/or USB charging port, remove water by shaking the Pod. Always cover the audio jack and USB charging port with a dust cap when not in use.

Open Source Software Legal Notices

This product contains Open Source Software. For more information regarding licenses, acknowledgment, required copyright notices, and other usage terms, visit <http://businessonline.motorolasolutions.com>

Go to **Resource Center**→**Product Information**→**Manual**→**Accessories**→**Remote Speaker**→**Microphone**

Service and Warranty

Other than the clip, the Pod is not repairable. The Pod is covered under the standard Motorola Solutions one-year limited warranty.

Warranty Exclusion

Motorola Solutions does not warrant the installation, maintenance or service of the Product, accessories, batteries, or parts.

Motorola Solutions is not responsible in any way for problems or damage caused by any ancillary equipment or peripherals (specific examples include, but are not limited to: batteries, chargers, adapters, and power supplies) not furnished or manufactured by Motorola Solutions which is attached to or used with the Product. When the Product is used with ancillary or peripheral equipment not supplied by Motorola Solutions, Motorola Solutions does not warrant the operation of the Product/peripheral combination. Motorola Solutions will not honor any warranty claim where the Product is used in such a combination and it is determined by Motorola Solutions that there is no fault with the Product. Upon open or dismantle the Product, the warranty is immediately voided. Motorola Solutions specifically disclaim any responsibility for any damage in any way caused by improper installation by unauthorized personnel.

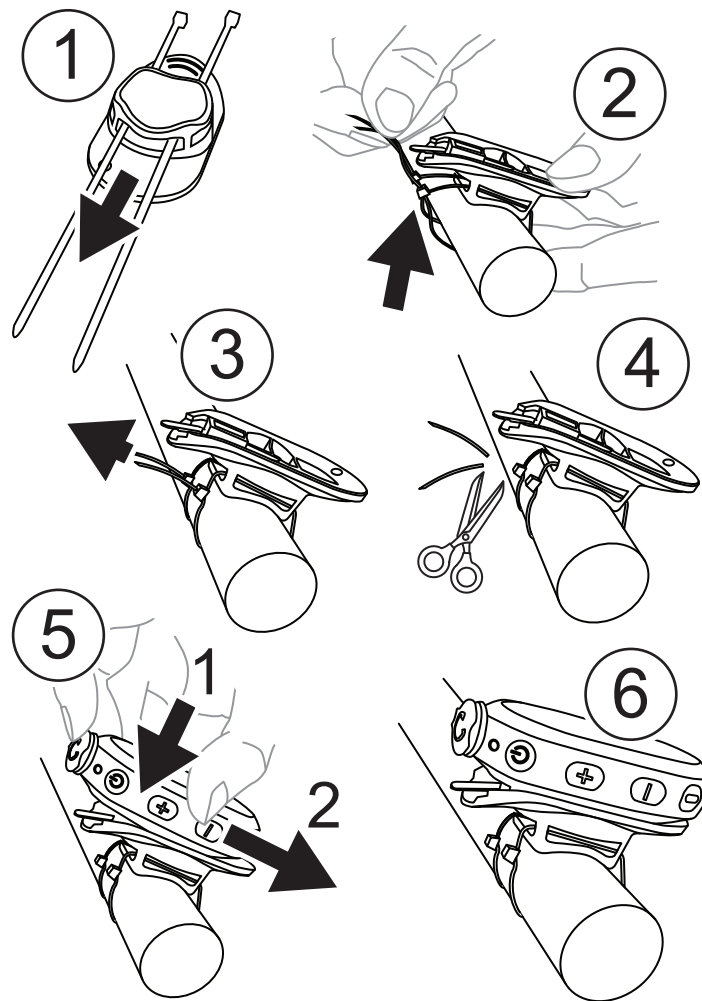
Chapter 1

Assembling Vehicle Mount to Vehicle Handlebar-Cable Tie

Procedure:

The following image shows the procedures to assemble vehicle mount to vehicle handlebar using cable tie.

Figure 1: Assembling Vehicle Mount to Vehicle Handlebar-Cable Tie



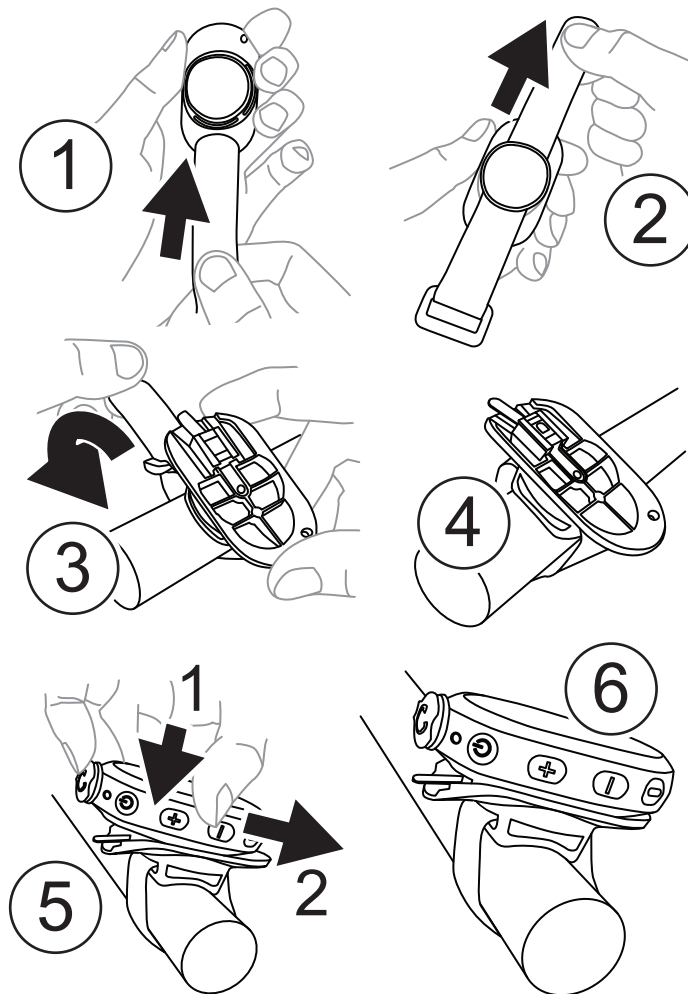
Chapter 2

Assembling Vehicle Mount to Vehicle Handlebar-Velcro Strap

Procedure:

The following image shows the procedures to assemble vehicle mount to vehicle handlebar using velcro strap.

Figure 2: Assembling Vehicle Mount to Vehicle Handlebar-Velcro Strap



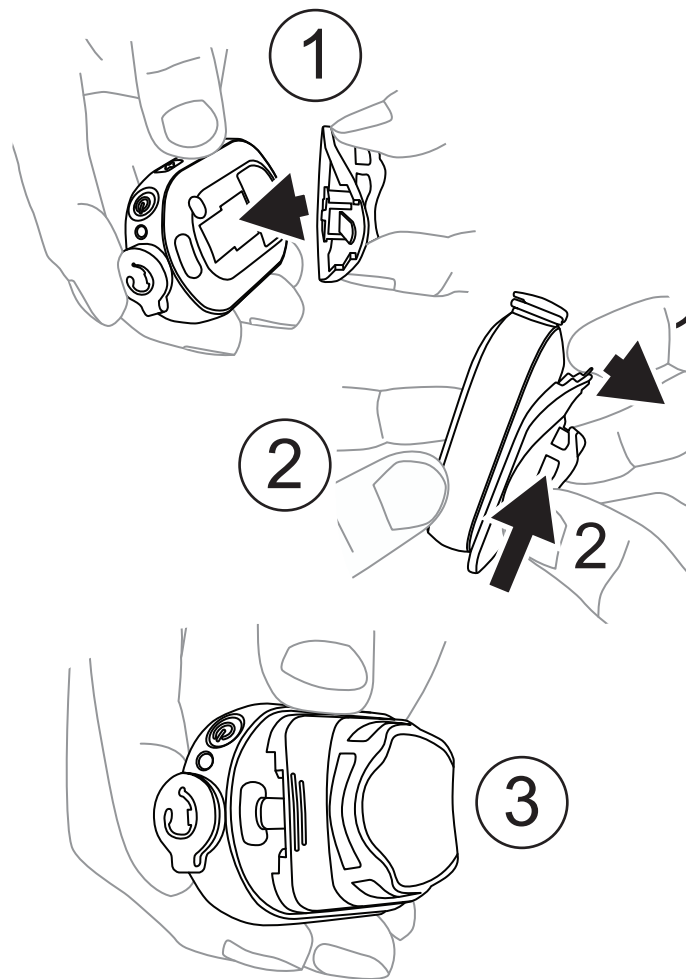
Chapter 3

Inserting BT POD to Vehicle Mount

Procedure:

The following image shows the procedures to insert Bluetooth (BT) Pod to vehicle mount.

Figure 3: Inserting BT POD to Vehicle Mount



Chapter 4

Removing BT POD from Vehicle Mount

Procedure:

The following image shows the procedures to remove Bluetooth (BT) Pod from vehicle mount.

Figure 4: Removing BT POD from Vehicle Mount

