

Carry Holster PMLN7989_ User Guide



MN005785A01-AB

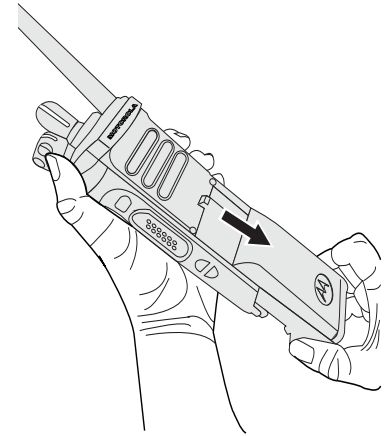
MOTOROLA, MOTO, MOTOROLA SOLUTIONS and the Stylized M logo are trademarks or registered trademarks of Motorola Trademark Holdings, LLC and are used under license. All other trademarks are the property of their respective owners. © 2019 Motorola Solutions, Inc. All Rights Reserved.

Printed in

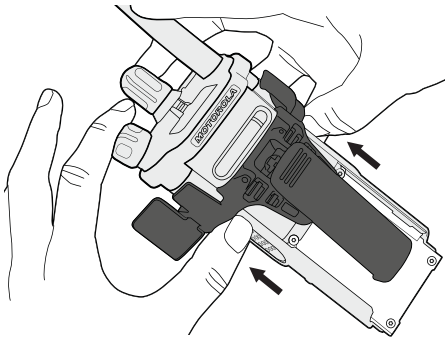


INSERTION

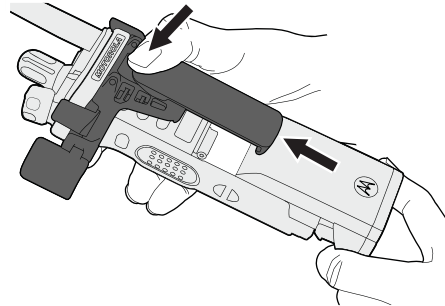
1. Remove the battery.



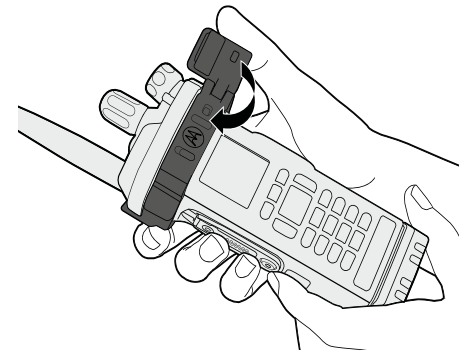
2. Slot in the holster. Ensure the catch is not attached with holster.



3. Insert the battery. Press on the belt clip for thicker batteries.



4. Snap in the catch to the holster.

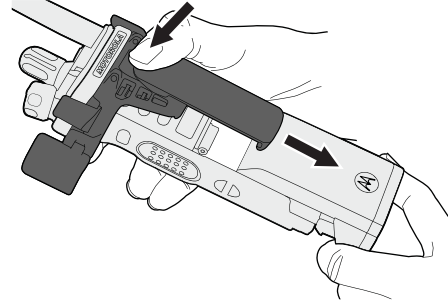


REMOVAL

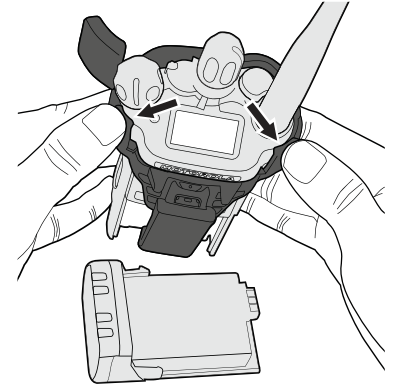
1. Unsnap the catch from holster.



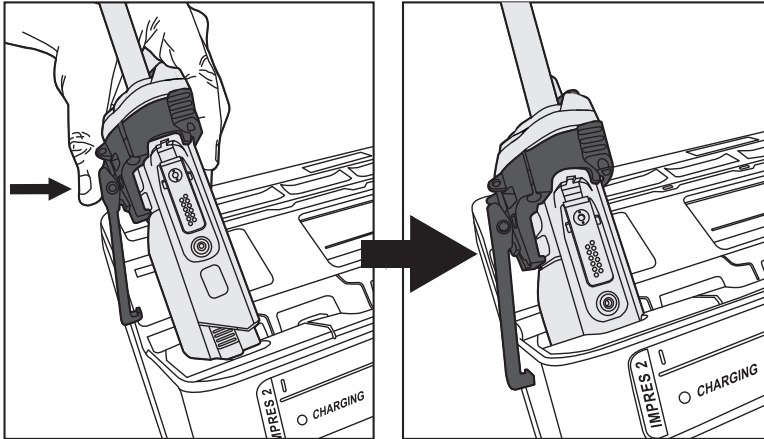
2. Remove the battery.



3. Pull the two catches outwards and slide down.



Note: When inserting a radio attached with the Carry Holster into the last slot of the Multi-Unit Charger, lift up the holster belt clip.



WARNING

DO NOT change batteries or accessories in hazard areas. To reduce the risk of ignition of a flammable atmosphere, battery pack must only be charged in non-flammable areas.