



PMLN8502_ IMPRES

Retainer Quick Reference

Guide

FEBRUARY 2023

© 2023 Motorola Solutions, Inc. All rights reserved



MN009520A01-AA

Safety and Legal

This section provides the safety and legal information for this product.

Intellectual Property and Regulatory Notices

Copyrights

The Motorola Solutions products described in this document may include copyrighted Motorola Solutions computer programs. Laws in the United States and other countries preserve for Motorola Solutions certain exclusive rights for copyrighted computer programs. Accordingly, any copyrighted Motorola Solutions computer programs contained in the Motorola Solutions products described in this document may not be copied or reproduced in any manner without the express written permission of Motorola Solutions.

No part of this document may be reproduced, transmitted, stored in a retrieval system, or translated into any language or computer language, in any form or by any means, without the prior written permission of Motorola Solutions, Inc.

Trademarks

MOTOROLA, MOTO, MOTOROLA SOLUTIONS, and the Stylized M Logo are trademarks or registered trademarks of Motorola Trademark Holdings, LLC and are used under license. All other trademarks are the property of their respective owners.

License Rights

The purchase of Motorola Solutions products shall not be deemed to grant either directly or by implication, estoppel or otherwise, any license under the copyrights, patents or patent applications of Motorola Solutions, except for the normal non-exclusive, royalty-free license to use that arises by operation of law in the sale of a product.

Open Source Content

This product may contain Open Source software used under license. Refer to the product installation media for full Open Source Legal Notices and Attribution content.

European Union (EU) and United Kingdom (UK) Waste of Electrical and Electronic Equipment (WEEE) Directive



The European Union's WEEE directive and the UK's WEEE regulation require that products sold into EU countries and the UK must have the crossed-out wheeled bin label on the product (or the package in some cases). As defined by the WEEE directive, this crossed-out wheeled bin label means that customers and end-users in EU and UK countries should not dispose of electronic and electrical equipment or accessories in household waste.

Customers or end-users in EU and UK countries should contact their local equipment supplier representative or service centre for information about the waste collection system in their country.

Disclaimer

Please note that certain features, facilities, and capabilities described in this document may not be applicable to or licensed for use on a specific system, or may be dependent upon the characteristics of

a specific mobile subscriber unit or configuration of certain parameters. Please refer to your Motorola Solutions contact for further information.

© 2023 Motorola Solutions, Inc. All Rights Reserved

Product Safety and RF Exposure Compliance



CAUTION: Before using this product, read the Product Safety and RF Exposure booklet enclosed with your radio which contains important operating instructions for safe usage and RF energy awareness and control for Compliance with applicable Standards and Regulations.

Warranty

The retainer is covered under the standard Motorola Solutions one-year limited warranty.

Warranty Exclusion

Motorola Solutions does not warrant the installation, maintenance or service of the Product, accessories, batteries, or parts.

Motorola Solutions is not responsible in any way for problems or damage caused by any ancillary equipment or peripherals (specific examples include, but are not limited to: batteries, chargers, adapters, and power supplies) not furnished or manufactured by Motorola Solutions which is attached to or used with the Product. When the Product is used with ancillary or peripheral equipment not supplied by Motorola Solutions, Motorola Solutions does not warrant the operation of the Product/peripheral combination. Motorola Solutions will not honor any warranty claim where the Product is used in such a combination and it is determined by Motorola Solutions that there is no fault with the Product. Upon open or dismantle the Product, the warranty is immediately voided. Motorola Solutions specifically disclaim any responsibility for any damage in any way caused by improper installation by unauthorized personnel.

Contact Us

The Centralized Managed Support Operations (CMSO) is the primary contact for technical support included in your organization's service agreement with Motorola Solutions.

Service agreement customers should be sure to call the CMSO in all situations listed under Customer Responsibilities in their agreement, such as:

- Before reloading software
- To confirm troubleshooting results and analysis before taking action

Your organization received support phone numbers and other contact information appropriate for your geographic region and service agreement. Use that contact information for the most efficient response. However, if needed, you can also find general support contact information on the Motorola Solutions website, by following these steps:

- 1 Enter motorolasolutions.com in your browser.
- 2 Ensure that your organization's country or region is displayed on the page. Clicking or tapping the name of the region provides a way to change it.
- 3 Select "Support" on the motorolasolutions.com page.

Comments

Send questions and comments regarding user documentation to documentation@motorolasolutions.com.

Provide the following information when reporting a documentation error:

- The document title and part number
- The page number or title of the section with the error
- A description of the error

Motorola Solutions offers various courses designed to assist in learning about the system. For information, go to <https://learning.motorolasolutions.com> to view the current course offerings and technology paths.

Icon Conventions

The documentation set is designed to give the reader more visual clues. The following graphic icons are used throughout the documentation set.



DANGER: The signal word DANGER with the associated safety icon implies information that, if disregarded, will result in death or serious injury.



WARNING: The signal word WARNING with the associated safety icon implies information that, if disregarded, could result in death or serious injury, or serious product damage.



CAUTION: The signal word CAUTION with the associated safety icon implies information that, if disregarded, may result in minor or moderate injury, or serious product damage.

CAUTION: The signal word CAUTION may be used without the safety icon to state potential damage or injury that is not related to the product.



IMPORTANT: IMPORTANT statements contain information that is crucial to the discussion at hand, but is not CAUTION or WARNING. There is no warning level associated with the IMPORTANT statement.

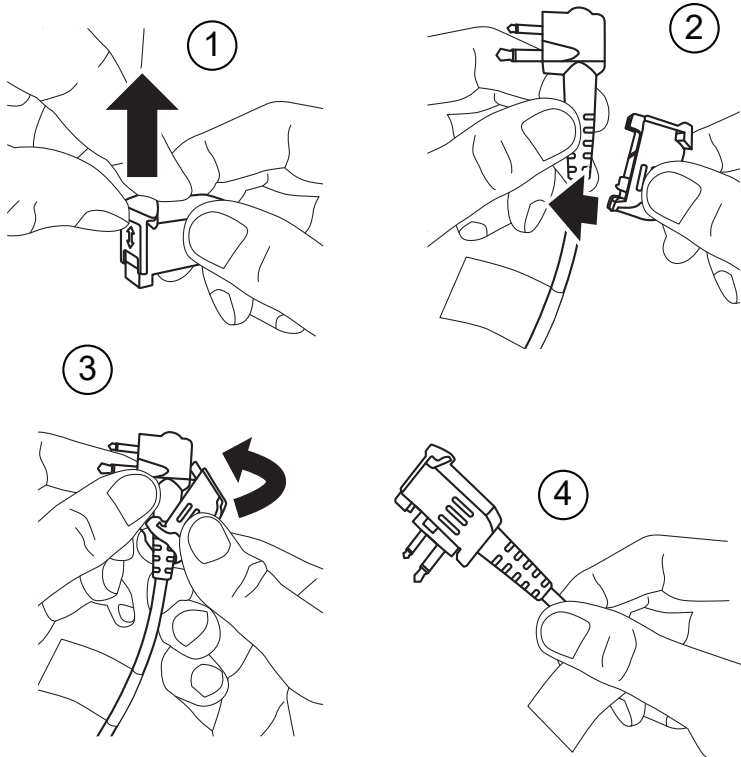


NOTE: NOTICE contains information more important than the surrounding text, such as exceptions or preconditions. They also refer the reader elsewhere for additional information, remind the reader how to complete an action (when it is not part of the current procedure, for instance), or tell the reader where something is on the screen. There is no warning level associated with a notice.

Chapter 1

Assembling Retainer to a Plug Connector

Follow the numbering in the image to perform the required actions.



Scan here to view the assembly video.
<https://youtu.be/VB9BpnTq0NQ>

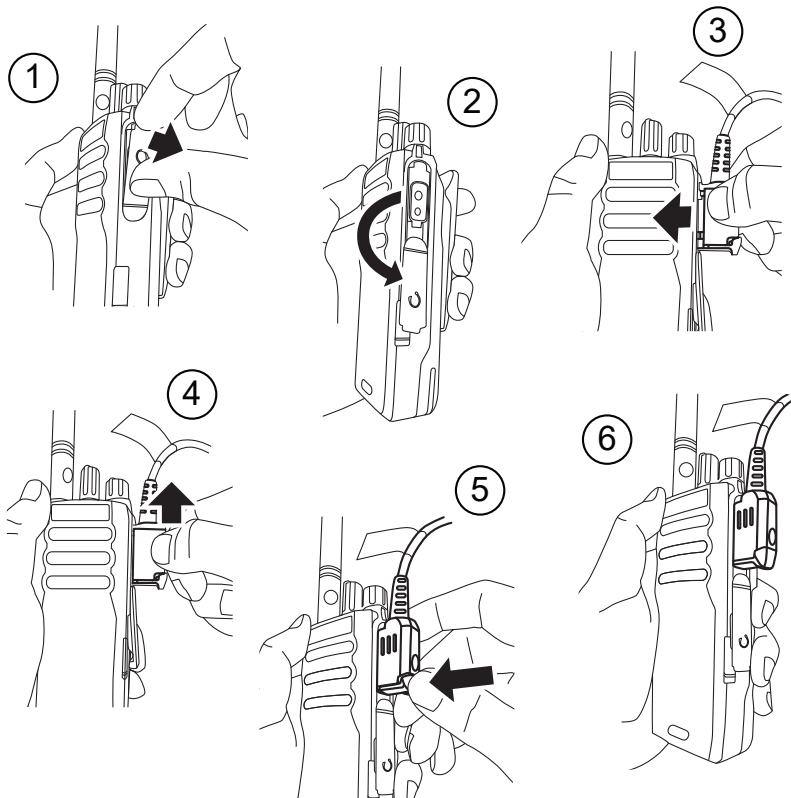
Procedure:

- 1 Push up the latch on the retainer.
- 2 Hook the lower part of the retainer into the plug connector cable.
- 3 Slide the retainer up onto the plug connector. Swivel back and forth if required.
- 4 Ensure that the retainer is assembled to the plug connector.

Chapter 2

Assembling Plug Connector to Your Radio

Follow the numbering in the image to perform the required actions.



Scan here to view the assembly video.
<https://youtu.be/o3roBaDYE40>

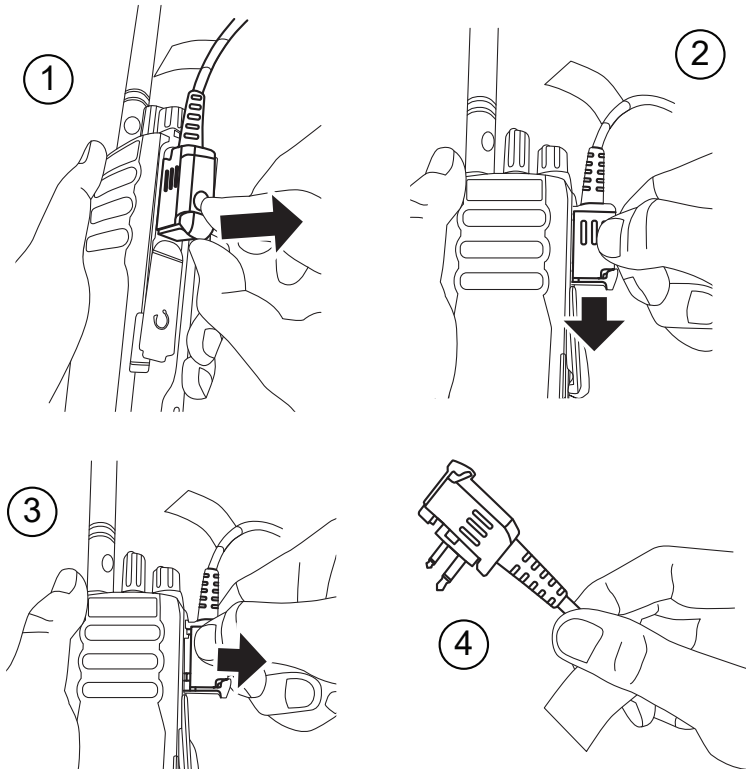
Procedure:

- 1 Open the dust cover.
- 2 Rotate the dust cover down.
- 3 Plug in the sub-assembly into the radio audio jack and press until it is fully inserted.
- 4 Slide up the retainer until you hear a click.
- 5 Push down the retainer latch to lock the sub-assembly to the radio.
- 6 Ensure that the sub-assembly is locked to the radio.

Chapter 3

Disassembling Plug Connector from Your Radio

Follow the numbering in the image to perform the required actions.



Scan here to view the disassembly video.
<https://youtu.be/XNWFrVC4rU4>

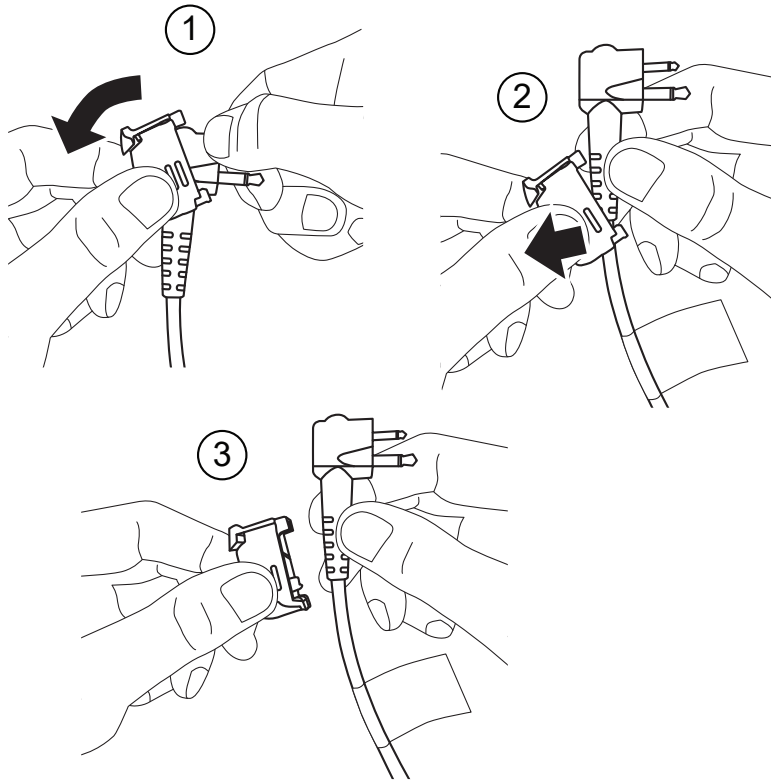
Procedure:

- 1 Unlock the sub-assembly by pulling up the retainer latch.
- 2 Slide down the retainer until you hear a click.
- 3 Pull out the sub-assembly from the radio.
- 4 Ensure that your sub-assembly is pulled out from the radio.

Chapter 4

Disassembling Retainer from a Plug Connector

Follow the numbering in the image to perform the required actions.



Scan here to view the disassembly video.
https://youtu.be/9Q9gPnI_icM

Procedure:

- 1 Pull back the top part of the retainer from the plug connector.
- 2 Slide down then remove the retainer from the plug connector. Swivel back and forth if required.
- 3 Ensure that the retainer is removed from the plug connector.