

APX-SERIES IMPRES™ 2
MULTI-UNIT CHARGER
POCKET INSERT KITS
NNTN9212

SERVICE MANUAL
REPLACING POCKET INSERTS



en-US

GETTING STARTED

The purpose of this manual is to provide detailed instructions on the procedure to remove and replace an APX-series Pocket Insert on an APX-series IMPRES 2 Multi-Unit Charger (MUC).

Replace an APX Pocket Insert on an APX IMPRES 2 MUC with the following:

- APX Next Pocket Insert

Table 1: APX-Series IMPRES 2 MUC and Pocket Insert

Charger Model	Charger Description	Pocket Insert Kit
PS000337A01 (UNIV)	6-Display IMPRES 2 MUC with Charger Reprogramming, IMPRES 2 Fleet Management, and USB Accessory Charging Only (APX NEXT)	NNTN9212

REQUIRED TOOLS

- Torque Screwdriver set for 6 in-lbs
- Torx T10 Screwdriver bit
- #2 Phillips screwdriver bit

PREREQUISITES

- Use a clean place to perform the procedure. Ensure no debris or liquid enters into the charger.
- Use Electrostatic Discharge (ESD) Best Practices:
 - Work on a hard surface such as table, counter top, or plank of wood.
 - Stand on a hard floor such as wood, or tile.
 - Wear anti-static clothing.
 - Use an anti-static wristband, or touch metal object throughout the procedure.
 - Use a humidifier in dry weather.

REMOVING AND REPLACING THE POCKET INSERTS IN AN IMPRES 2 MUC

1. Unplug the power cord to the MUC.
2. Using the #2 Phillips screwdriver bit, remove the four screws holding the rear shroud in place.



Figure 1: The four screws on the rear shroud.

3. Hold the rear shroud along the sides, and pull it away from the unit to detach it.



Figure 2: Shroud removal.

4. Remove the TorxT10 screws on each pocket insert being replaced.

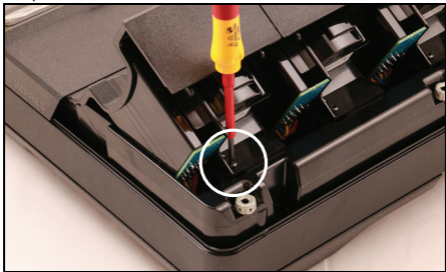


Figure 3: Pocket insert screw removal.

5. Slightly lift the back of the pocket insert to disengage the pocket insert from the post. Then, push the pocket insert out towards the front of the unit to remove the pocket insert.

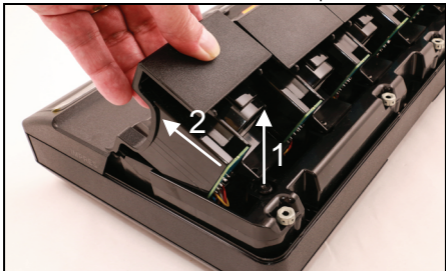


Figure 4: Pocket insert removal.

- Unplug the cable for the pocket insert from the unit, and note the orientation of the receptacle.

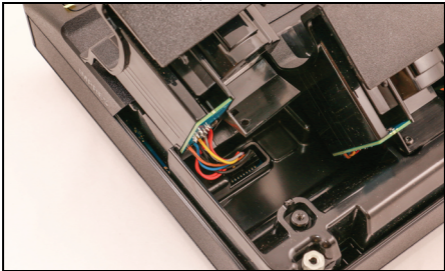


Figure 5: Cable removal for each pocket insert.



Figure 6: The connector is keyed and only fits one way into the charger.

7. Plug in the cable to install the new pocket insert. The connector is keyed to ensure proper orientation. The procedure results in a half twist of the harness.

NOTE: If the connector disengages from the main board after pocket insert installation, reinstall the connector before securing the pocket insert screw.

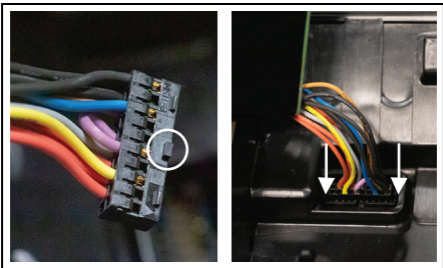


Figure 7: Align and push down the connector into the charger.

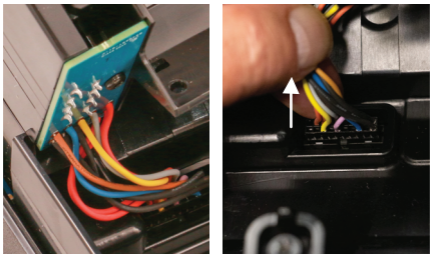


Figure 8: Slightly tug on the cable to ensure it is correctly positioned and tightened in the receptacle.

8. Align the pocket back into the charger, and slide it back until the pocket snaps into place.

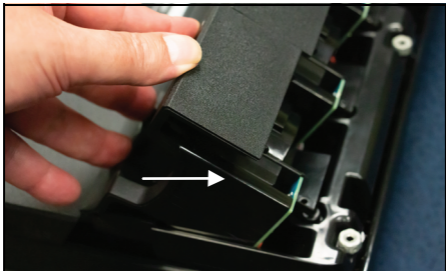


Figure 9: Rotate the pocket around and align it to the charger. The wires are half twisted. Do not pull up on the wire harness.

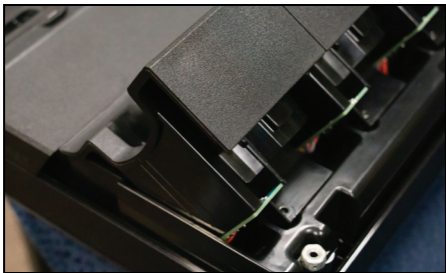


Figure 10: The screw hole of the pocket will align to the hole in the charger.

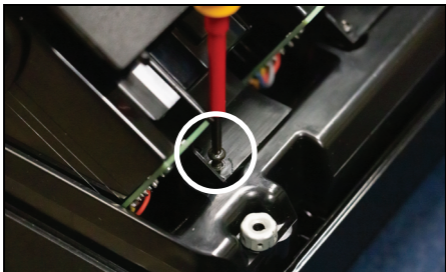


Figure 11: Reinstall the T10 screw and tighten to 6 in-lbs.

9. Slide the rear shroud onto the unit. Slide both sides forward, and lock the tabs into place to reinstall the hood.

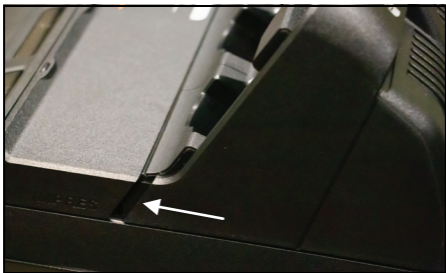


Figure 12: Hood reinstallation.



Figure 13: Shroud screws installation.

10. Reinstall the four #2 Phillips screws to secure the shroud.
11. Plug in the AC Power cord into the MUC. Ensure all six pocket LED illuminate in GREEN color for one second.

NOTES



MOTOROLA SOLUTIONS

Motorola Solutions Malaysia Sdn. Bhd. (Co. No. 455657-H)
Plot 2A, Medan Bayan Lepas
Mukim 12, S.W.D.
11900 Bayan Lepas, Penang.
Malaysia.

MOTOROLA, MOTO, MOTOROLA SOLUTIONS and the Stylized M logo are trademarks or registered trademarks of Motorola Trademark Holdings, LLC and are used under license.

All other trademarks are the property of their respective owners.

© 2019 Motorola Solutions, Inc. All rights reserved.



MN005697A01-AB

Printed in

